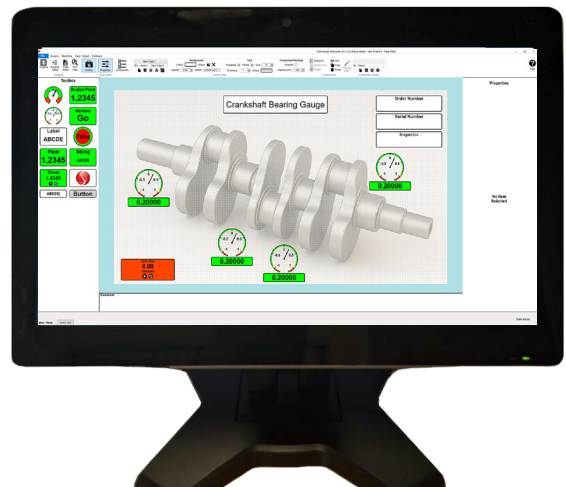


## SI 8500 READOUT

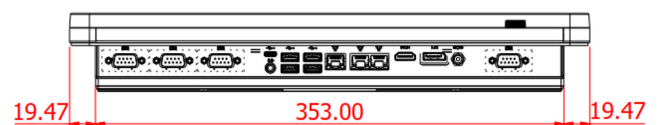
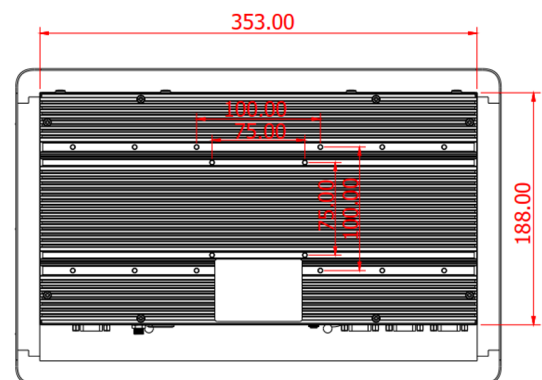
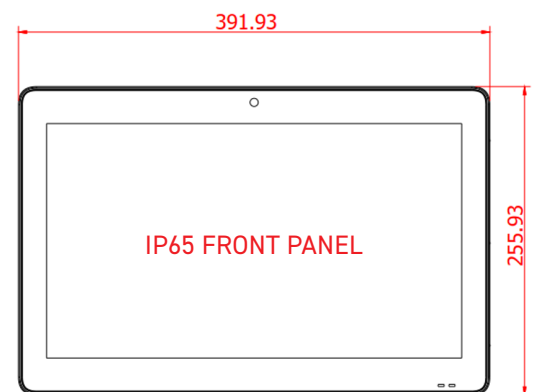
### HEAVY DUTY & HIGH POWERED

Solartron offers a high powered readout with a 15.6" capacitive touch screen, the capability to network up to 200 sensors, and multiple levels of software for different applications.



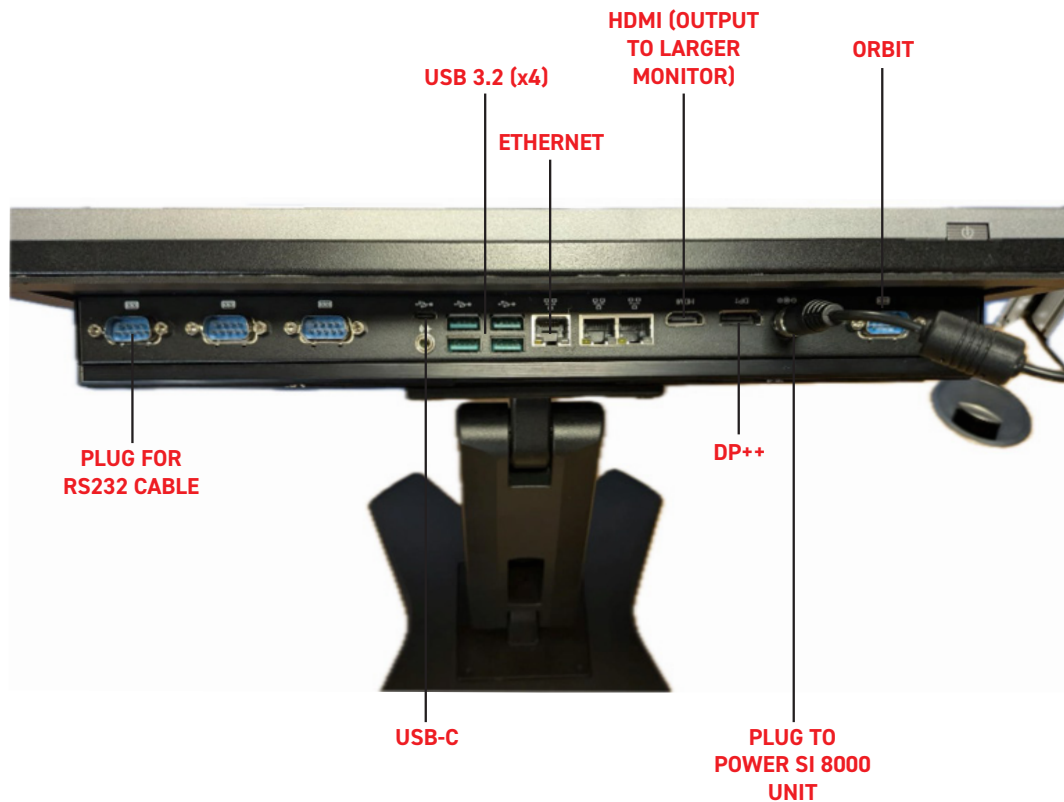
#### KEY FEATURES

- **Superior Performance** : Heavy Duty Industrial Casing with Fanless PC Intel I 5 Processor
- **Data Control** : 500 GB of Storage, with easy data export
- **Paneling Options** : VESA and Panel Mount Options
- **Variation** : HDMI and DP++ outputs for connections to larger screens (when required)
- **Easy Integration** : Connects with all Orbit Sensors & Modules
- **High Ingress Protection** : IP65 Front Panel
- Run up to 200 sensors
- Supports manual, semi-automatic, and automatic fixturing
- Handles complex application
- Pre-loaded formulas
- Sequencing is available
- Robot handshaking
- Mastering integrity
- Verification and Traceability
- Export to multiple SPC formats
- Service Maintenance Agreement and Setups are available

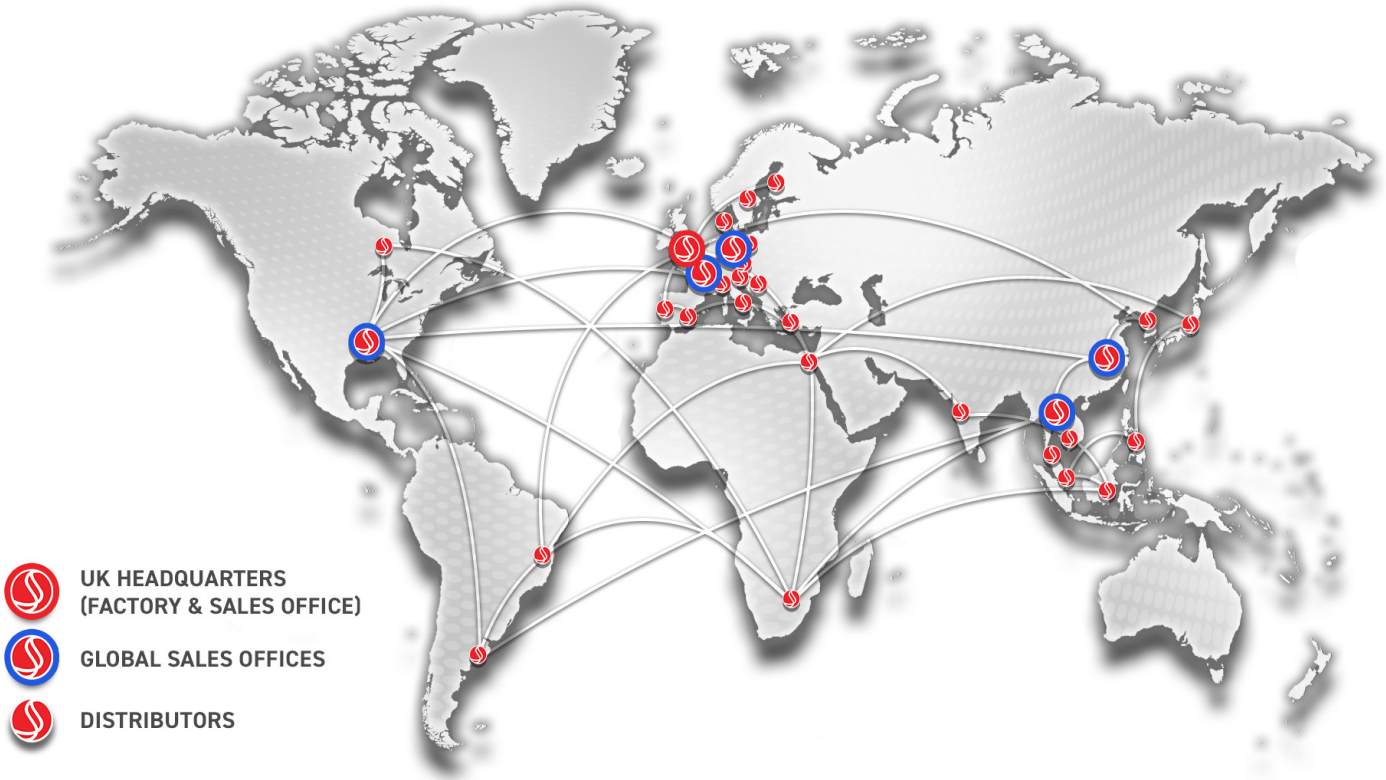


**REAL PRECISION. REAL SOLUTIONS.**

[www.solartronmetrology.com](http://www.solartronmetrology.com) • [sales.solartronmetrology@ametec.com](mailto:sales.solartronmetrology@ametec.com)



PRODUCT	SI 8500
<b>PERFORMANCE</b>	
Maximum Number of Orbit Modules	200 per network
Maximum Number of Networks	10
Data Rate	12 Mbps (USB)
Math Equations	Multiple Formula Templates Pre-Loaded
Output Format	.csv, Excel, QcCalc, QsStat (Q-DAS)
<b>HARDWARE</b>	
Casing	Plastic & Sheet Metal
Touch Screen	Capacitive Touch Screen
Operating System	Windows
Processor	Intel® Core™ i5-1145GRE, Quad Core, 8 M Cache, 1.5 GHz (4.1GHz), 15 W
Memory	8 GB
Storage (Hard Disc Drive)	500 GB
Signal Connections	I/O (NPN, PNP, TTL) via Digital Input/Output Module (DIOM2) (DIOM2 Optional)
Output Connections	USB 3.2 (X4), USB Type C, RS232, RS485, Ethernet
Display Connections	HDMI, DP++ (3840 X 2160 @ 60 Hz)
Power	100-240 VAC (via power pack)
Storage Temperature (°C)	-30 to +80
Operating Temperature (°C)	5 to +60
Sealing	IP 65 (front panel), IP 50 (Rear)
Mounting	VESA 100 x 100 mm or Panel Mount



-  **UK HEADQUARTERS  
(FACTORY & SALES OFFICE)**
-  **GLOBAL SALES OFFICES**
-  **DISTRIBUTORS**

### UK Head Office and Factory

Solartron Metrology  
 Steyning Way  
 Bognor Regis  
 West Sussex  
 UK  
 PO22 9ST  
 Tel: +44 (0) 1243 833333  
 Email: sales.solartronmetrology@ametek.com

### Germany

Ametek GmbH  
 Solartron Metrology Division  
 Rudolf-Diesel-Strasse 16  
 40670 Meerbusch  
 Tel: +49 (0) 2159 9136 500  
 Email: vertrieb.solartron@ametek.com

### USA

Solartron Metrology  
 915 N. New Hope Road, Suite C  
 Gastonia, NC 28054  
 Tel: +1 800 873 5838  
 Email: usasales.solartronmetrology@ametek.com

### France

Ametek SAS  
 Solartron Metrology Division  
 Rond point de l'épine des champs  
 Buroplus Bat D  
 Elancourt  
 78990  
 France  
 Tel: +33 (0) 1 30 68 89 50  
 Email: Info.solartronmetrology@ametek.fr

### Thailand

Ametek (Thailand)  
 Solartron Metrology Division  
 B4.1.1 – B4.1.3 Floor 1st, SUMMER Lasalle  
 846 La Salle Rd., Bangna Tai, Bang Na  
 Bangkok, 10260, Thailand  
 Tel: +66 2 012 7500  
 Mobile: +66 92 087 9222  
 Email: hidenao.tanaka@ametek.com

### China

Ametek Commercial Enterprise (Shanghai) Co., Ltd  
 Part A1, A4 2nd Floor  
 Building No 1, No 526 Fute  
 3rd Road East  
 Shanghai  
 Pilot Free Trade Zone  
 200131  
 China  
 Tel: +86 21 5763 2509  
 Email: china.solartronmetrology@ametek.com

Solartron Metrology also carries an extensive network of sales agents in all major countries. For a local contact, go to [www.solartronmetrology.com/](http://www.solartronmetrology.com/) contact or email at [sales.solartronmetrology@ametek.com](mailto:sales.solartronmetrology@ametek.com)